

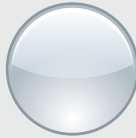
LENS BARCELONA

LED-
VERZEICHNIS
ab Seite
97

CHARAKTERISTIK:



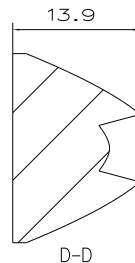
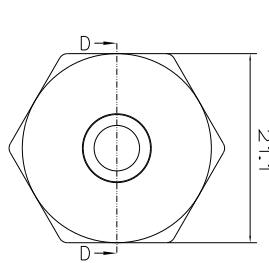
Narrow



Polished



PMMA

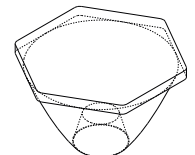
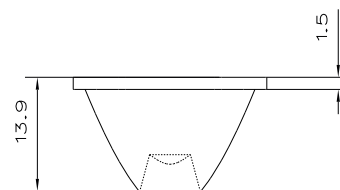
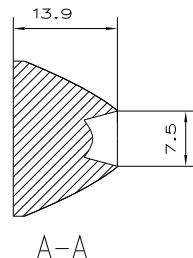
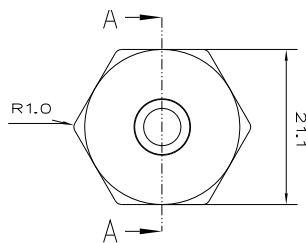


- » Vielfältig einsetzbar mit transparenter Lichtaustrittsfläche
- » Sechseckige Lichtaustrittsfläche erlaubt lückenloses Aneinandersetzen für optimale Ausnutzung der Grundfläche
- » Abstrahlcharakteristik Narrow

LENS BARCELONA

Artikel-Nr.:	L051-CP-967
Typ:	Single Reflector Lens
Schlüsselweite:	21.1 mm
Höhe:	13.9 mm
Charakteristik:	Narrow
Oberfläche:	Polished
FWHM:	7.2°
Effizienz theoretisch:	88 %
Material:	PMMA

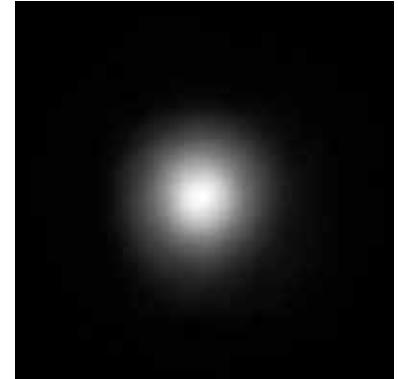
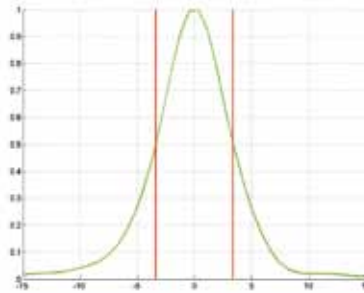
Alle Angaben / Maße sind Circa-Angaben und unverbindlich, technische Änderungen vorbehalten.
Unverbindliche Labormesswerte bezogen auf eine Referenz LED.



CREE

XR-E

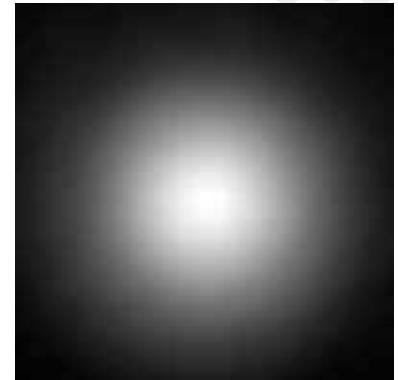
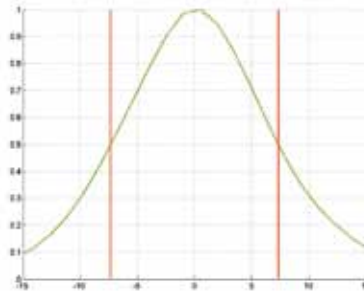
Strahldaten

 FWHM **6.8°**


NICHIA

183

Strahldaten

 FWHM **14.8°**


PHILIPS

Luxeon A

Strahldaten

 FWHM **11.1°**


PHILIPS Luxeon R

Strahldaten

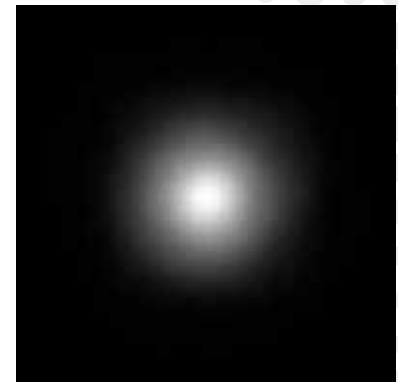
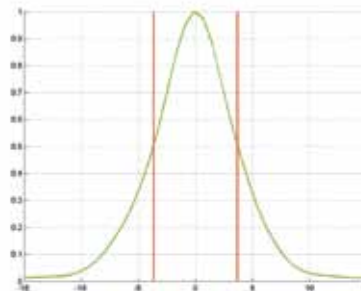
FWHM 9.9°



PHILIPS Luxeon Rebel

Strahldaten

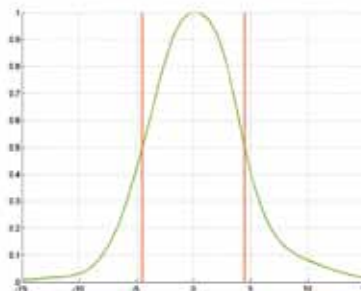
FWHM 7.4°



SAMSUNG 3535

Strahldaten

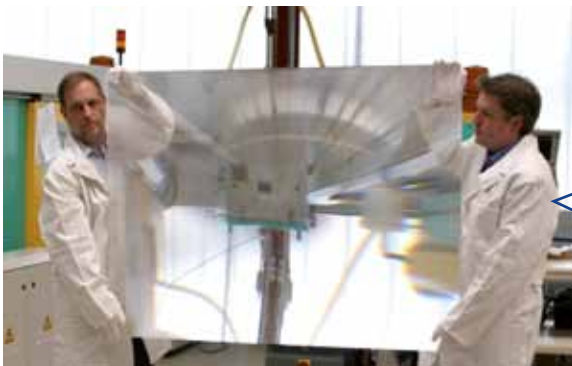
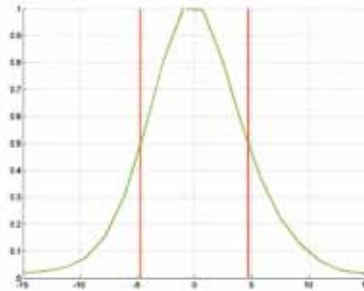
FWHM 8.9°



SEOUL Z5

Strahldaten

FWHM 9.4°



Wussten Sie?

IMOS stellt Optiken für
die Solarindustrie her