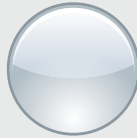


LENS LONDON

CHARACTERISTICS:



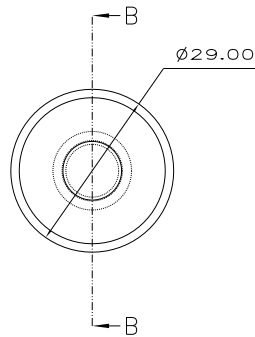
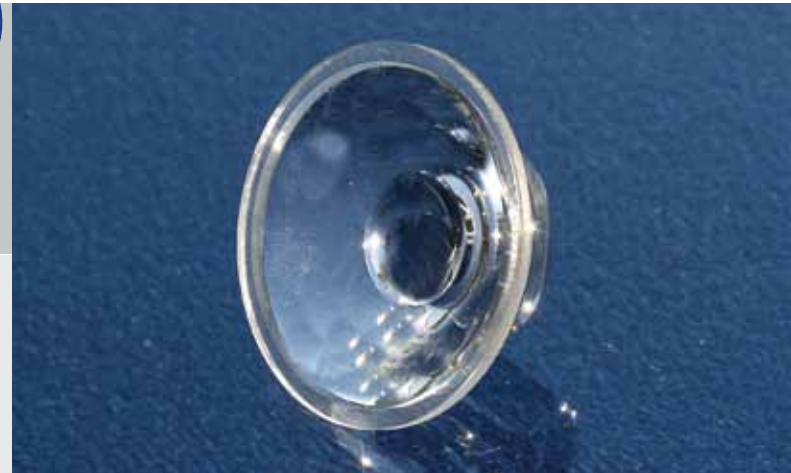
Narrow



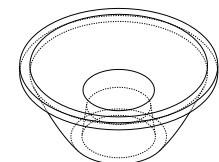
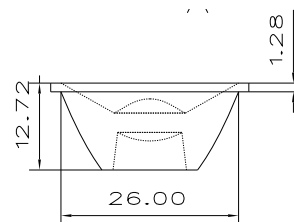
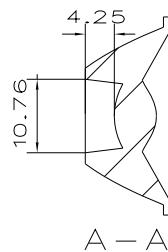
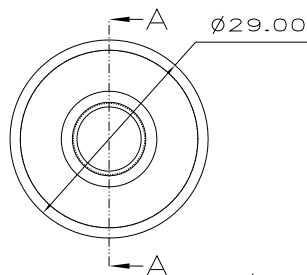
Polished



PMMA



- » Vielfältig einsetzbar mit transparenter Lichtaustrittsfläche
- » Erzeugt besonders enge Abstrahlcharakteristik vom Typ Narrow
- » Auch geeignet für nicht zu ausgedehnte LES (Light emitting surface) oder CoB (Chip on Board); Abstrahlcharakteristik Medium



LENS LONDON

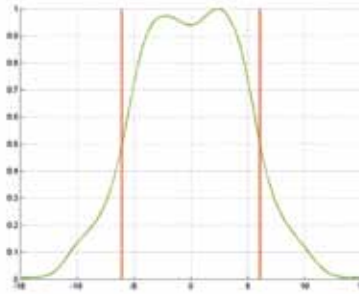
Artikel-Nr.:	L051-DP-716
Typ:	Single Reflector Lens
Diameter:	29 mm
Höhe:	12.7 mm
Charakteristik:	Narrow
Oberfläche:	Polished
FWHM:	6.4°
Effizienz theoretisch:	89 %
Material:	PMMA

Alle Angaben / Maße sind Circa-Angaben und unverbindlich, technische Änderungen vorbehalten.
Unverbindliche Labormesswerte bezogen auf eine Referenz LED.

CREE XM-L

Strahldaten

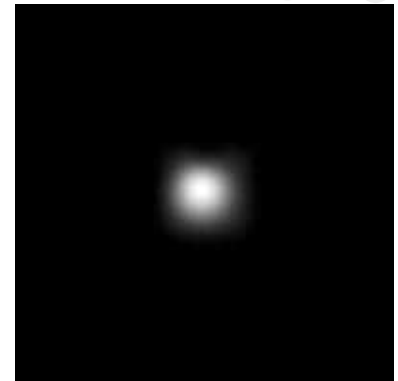
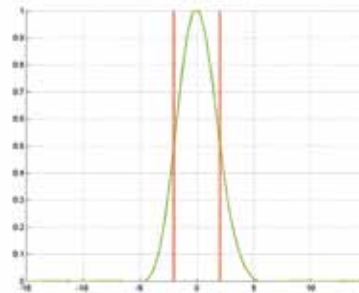
FWHM 12.1°



CREE XP-C

Strahldaten

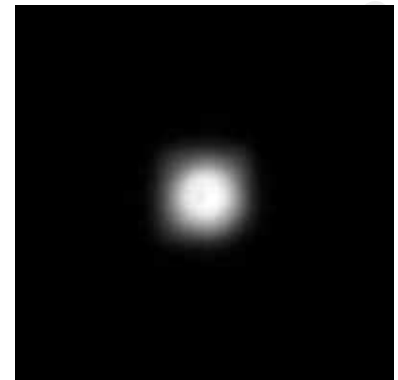
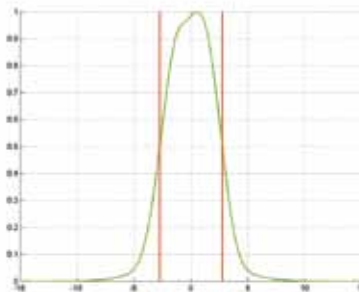
FWHM 4.0°



OSRAM Opto Semiconductors Golden Dragon

Strahldaten

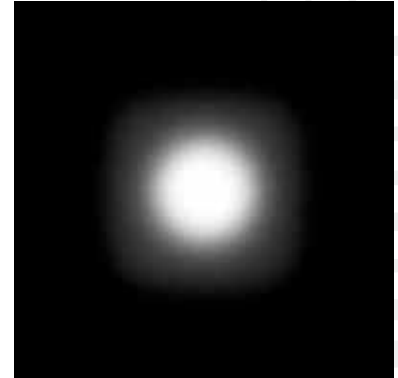
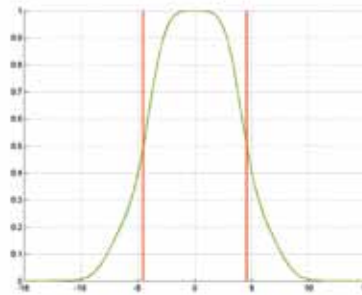
FWHM 5.5°



PHILIPS Luxeon R

Strahldaten

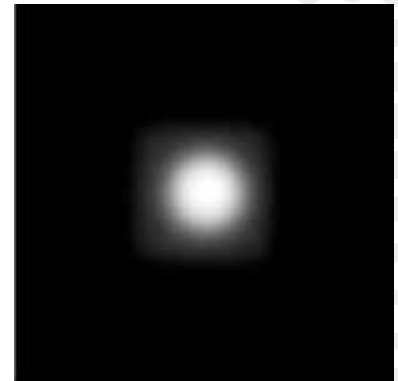
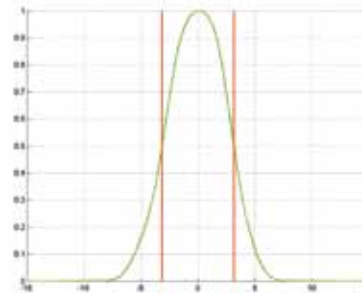
FWHM 7.2°



PHILIPS Luxeon Rebel

Strahldaten

FWHM 5.1°



PHILIPS Luxeon COP

Strahldaten

FWHM 26.0°

