

LENS MILANO

CHARAKTERISTIK:



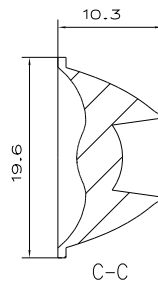
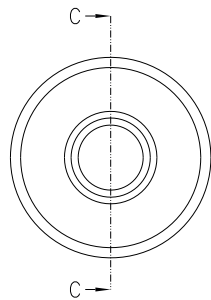
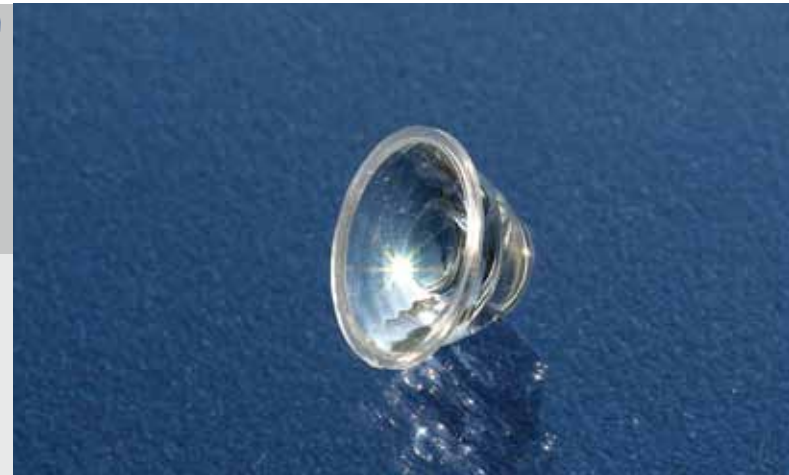
Medium



Ripple



PMMA

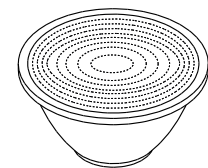
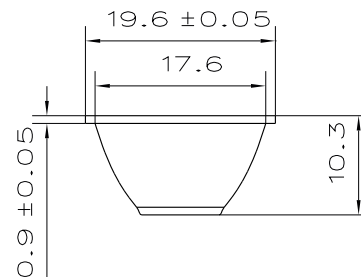
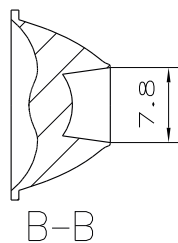
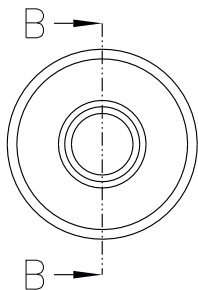


- » Geeignet für kompakte Einbausituationen für eine Vielzahl von Chipgeometrien
- » Lichtaustrittsfläche mit zirkularen Rippeln für verminderte Blendwirkung
- » Abstrahlcharakteristik Medium

LENS MILANO

Artikel-Nr.:	L051-BS-641
Typ:	Single Reflector Lens
Diameter:	19.6 mm
Höhe:	10.3 mm
Charakteristik:	Medium
Oberfläche:	Ripple
FWHM:	10.0 °
Effizienz theoretisch:	89 %
Material:	PMMA

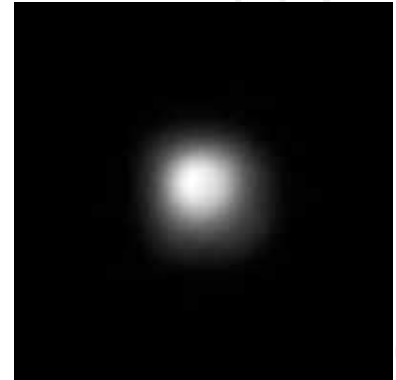
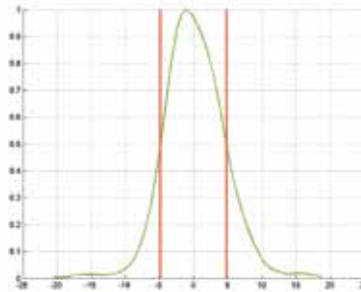
Alle Angaben / Maße sind Circa-Angaben und unverbindlich, technische Änderungen vorbehalten.
Unverbindliche Labormesswerte bezogen auf eine Referenz LED.



CREE XR-E

Strahldaten

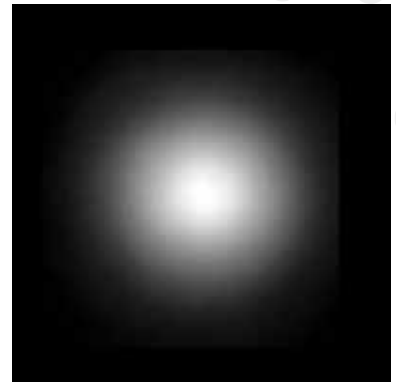
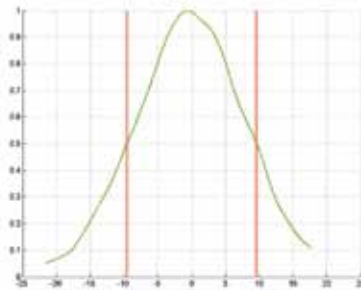
FWHM 10.0°



NICHIA 183

Strahldaten

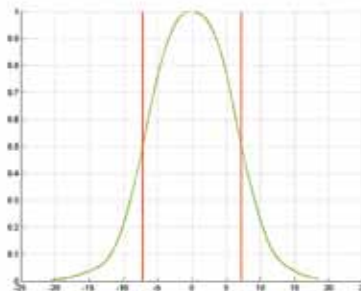
FWHM 19.1°



NICHIA 219

Strahldaten

FWHM 14.1°

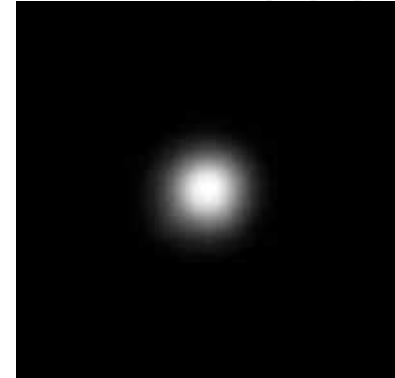
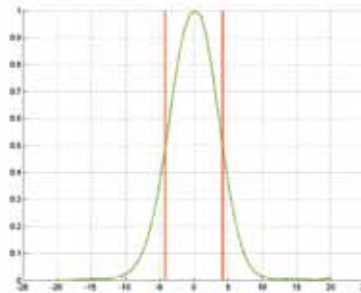


OSRAM

Opto Semiconductors

SSL150
Strahldaten

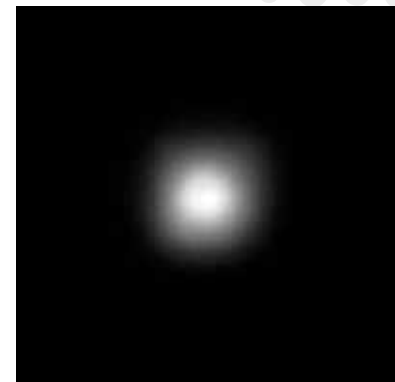
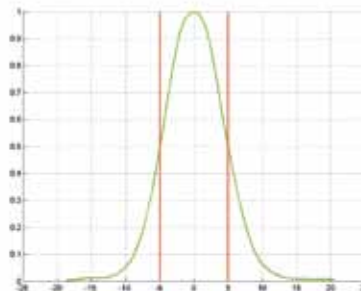
FWHM 8.3°


OSRAM

Opto Semiconductors

SSL80
Strahldaten

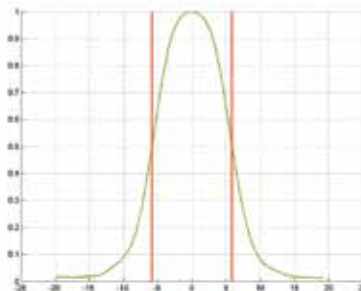
FWHM 10.0°


OSRAM

Opto Semiconductors

Oslon Square
Strahldaten

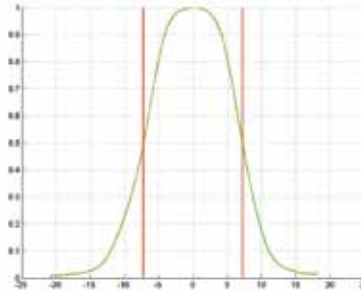
FWHM 11.7°



PHILIPS Luxeon A

Strahldaten

FWHM 14.4°



PHILIPS Luxeon R

Strahldaten

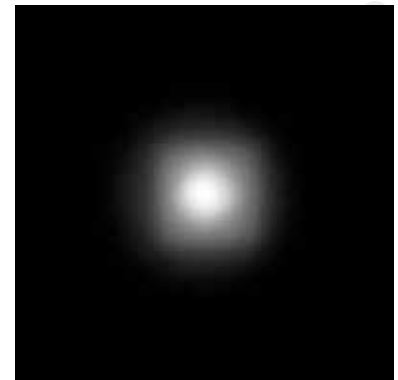
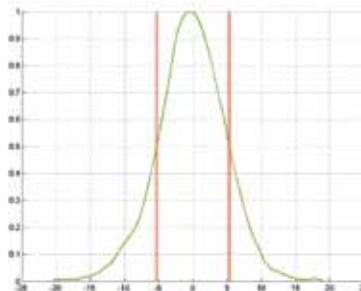
FWHM 14.3°



PHILIPS Luxeon Rebel

Strahldaten

FWHM 10.5°



PHILIPS Luxeon T

Strahldaten

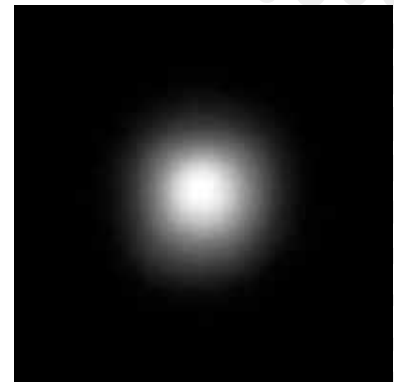
FWHM 10.5°



SAMSUNG 3535

Strahldaten

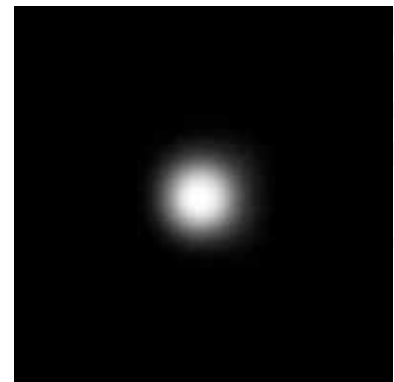
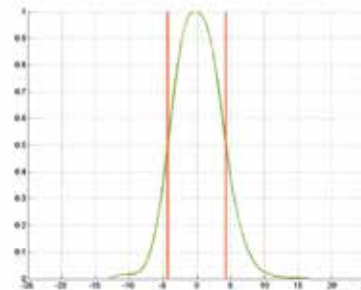
FWHM 12.6°



NICHIA XPG2

Strahldaten

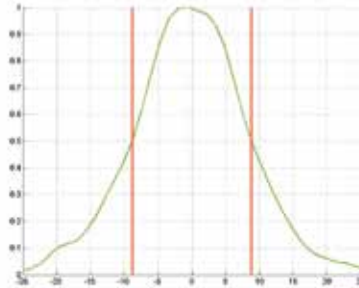
FWHM 8.6°



SEOUL Z1

Strahldaten

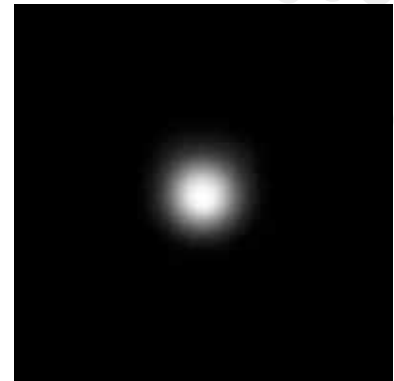
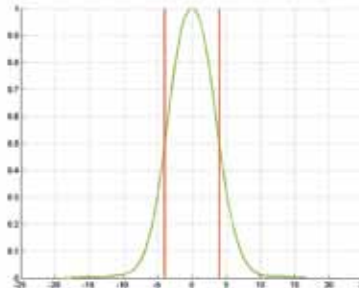
FWHM 17.6°



SEOUL Z5

Strahldaten

FWHM 8.0°



Wussten Sie?

IMOS bietet
 Ihnen automatische
 Baugruppenmontage an

