

LENS TORINO

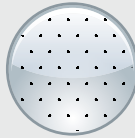
LED-
VERZEICHNIS
ab Seite
97



CHARAKTERISTIK:



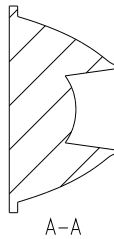
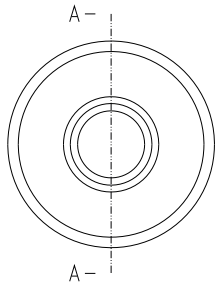
Diffuse



Satiniert



PMMA

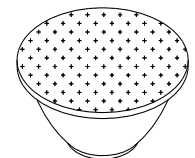
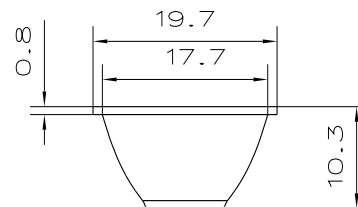
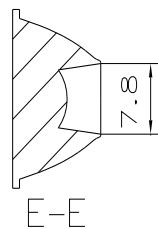
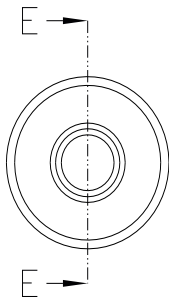


- » Geeignet für kompakte Einbausituationen für eine Vielzahl von Chipgeometrien
- » Satinierte Lichtaustrittsfläche für verminderte Blendwirkung
- » Abstrahlcharakteristik Diffuse

LENS TORINO

Artikel-Nr.:	L051-BF-345
Typ:	Single Reflector Lens
Diameter:	19.7 mm
Höhe:	10.3 mm
Charakteristik:	Diffuse
Oberfläche:	Satiniert
FWHM:	37.6°
Material:	PMMA

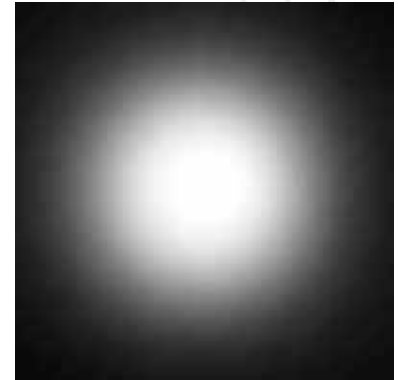
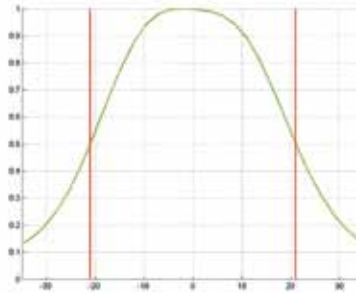
Alle Angaben / Maße sind Circa-Angaben und unverbindlich, technische Änderungen vorbehalten.
Unverbindliche Labormesswerte bezogen auf eine Referenz LED.



CREE XP-E

Strahldaten

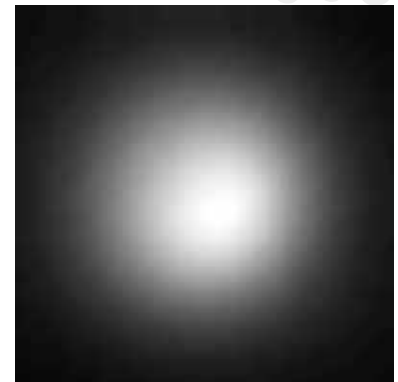
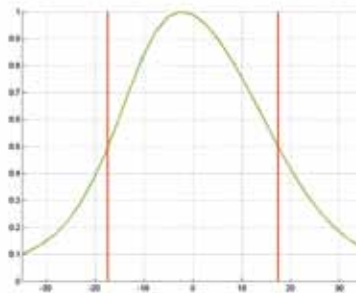
FWHM 42.1°



CREE XR-E

Strahldaten

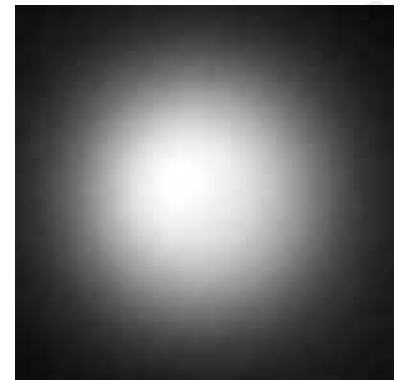
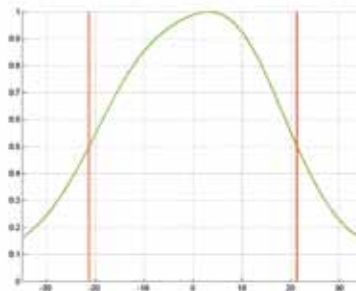
FWHM 34.8°



NICHIA 183

Strahldaten

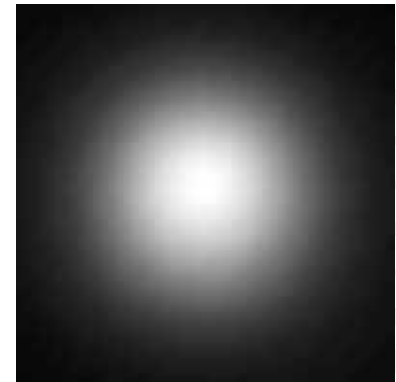
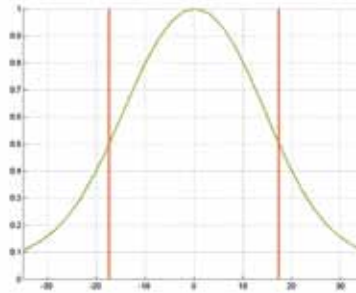
FWHM 42.6°



NICHIA 219

Strahldaten

FWHM 34.8°



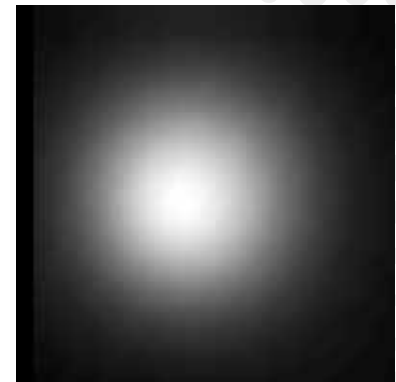
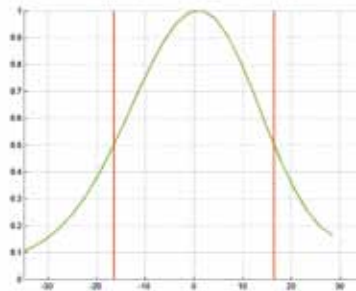
OSRAM

Opto Semiconductors

SSL 80

Strahldaten

FWHM 33.0°



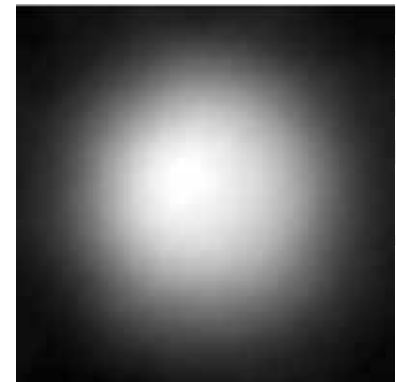
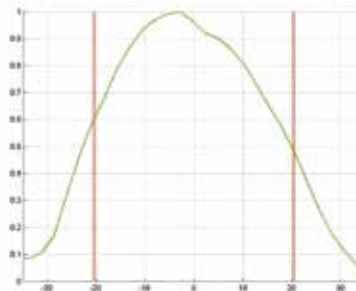
OSRAM

Opto Semiconductors

SSL 150

Strahldaten

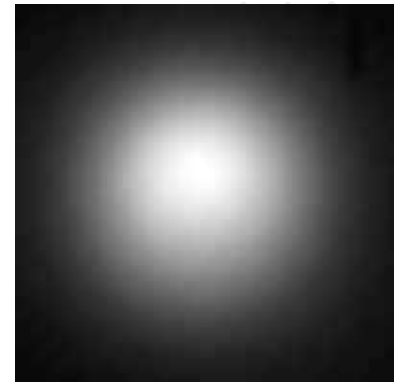
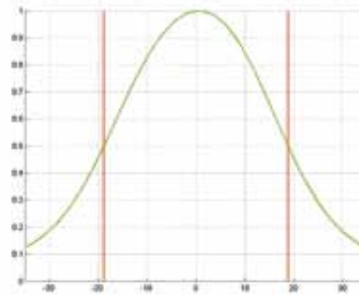
FWHM 40.9°



PHILIPS Luxeon A

Strahldaten

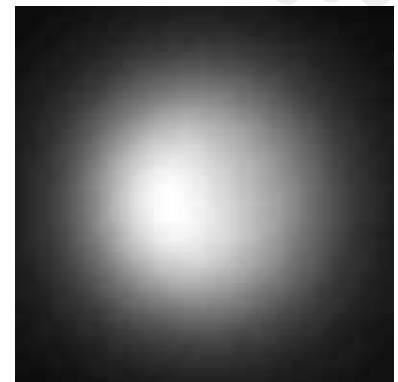
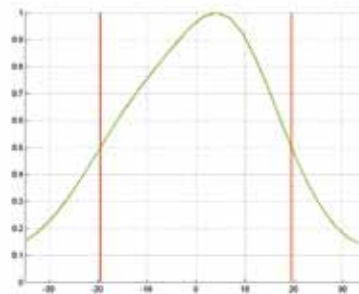
FWHM 37.7°



PHILIPS Luxeon R

Strahldaten

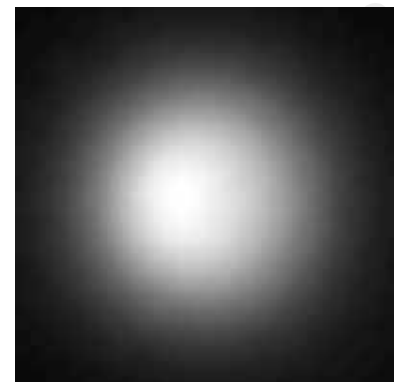
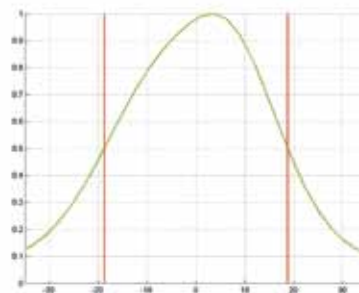
FWHM 39.1°



PHILIPS Luxeon Rebel

Strahldaten

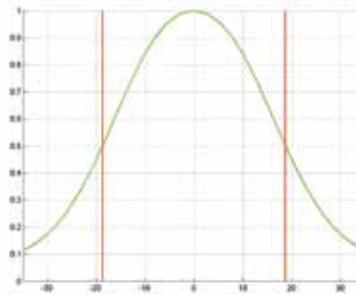
FWHM 37.6°



PHILIPS Luxeon T

Strahldaten

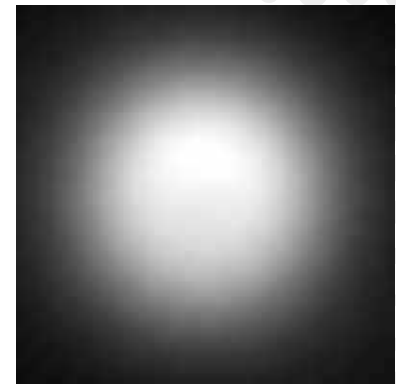
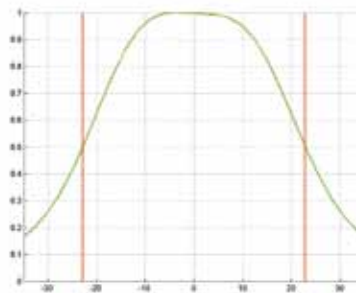
FWHM 37.5°



SAMSUNG 3535

Strahldaten

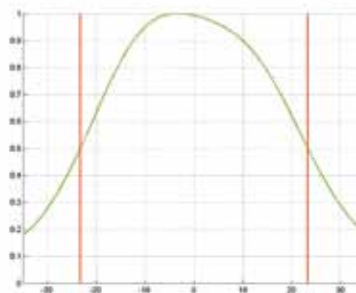
FWHM 45.8°



SEOUL Z1

Strahldaten

FWHM 46.6°



**SEOUL
Z5 (P)****Strahldaten**

FWHM 27.9°

